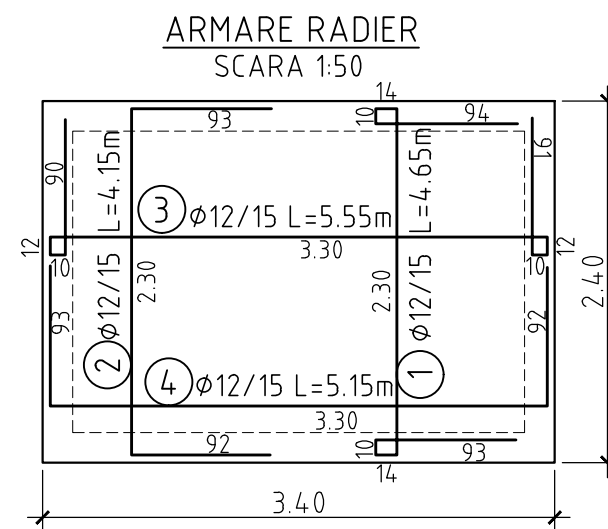
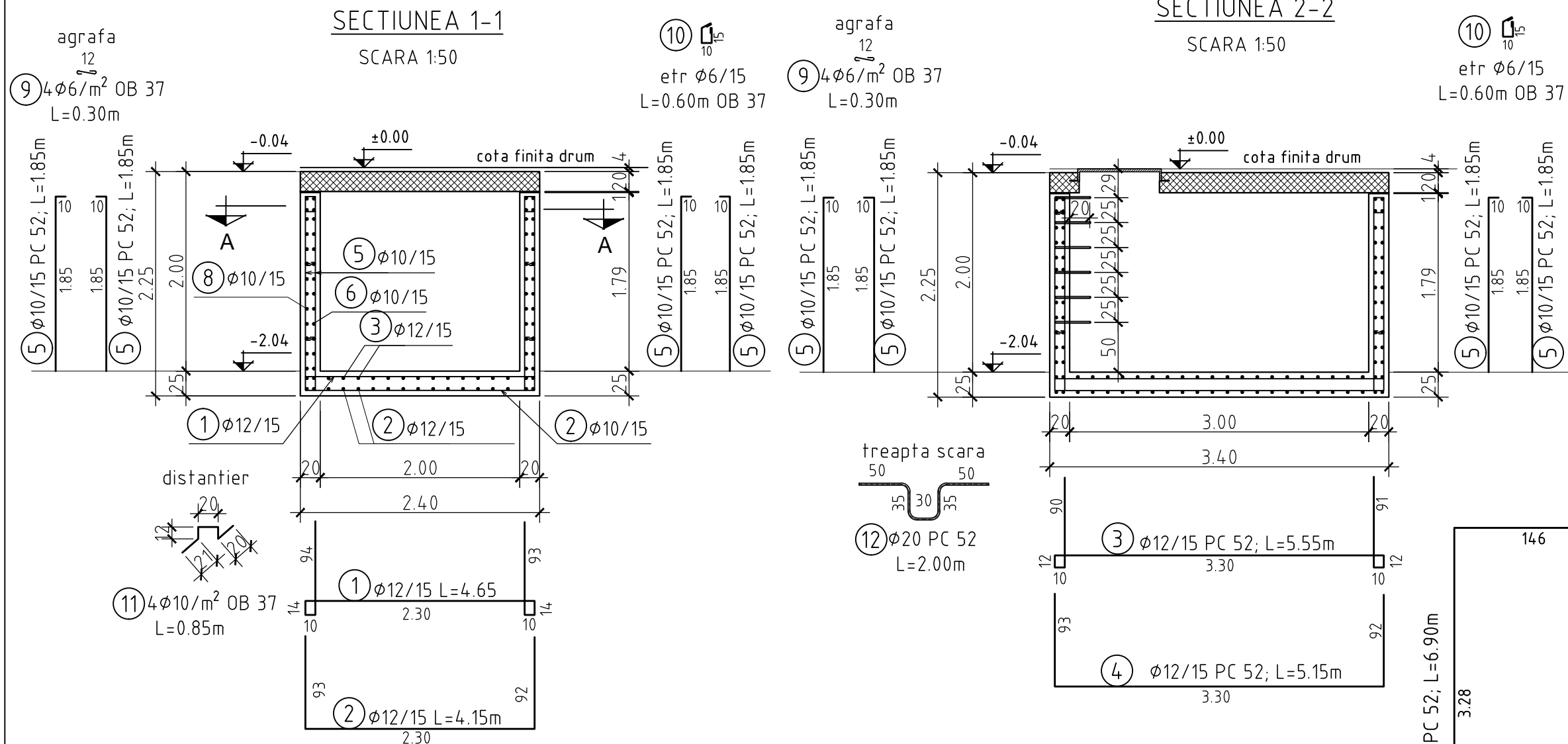
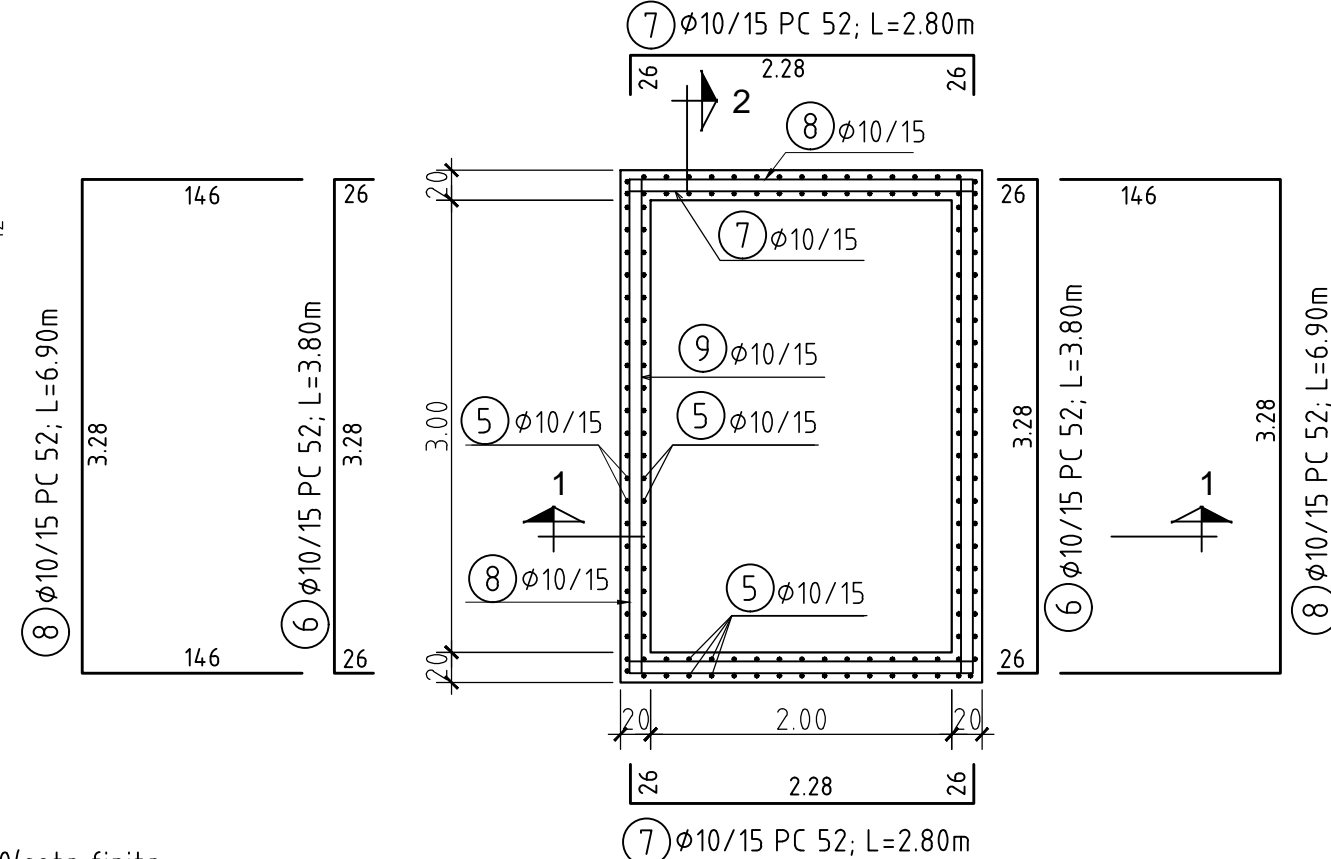


PLAN ARMARE CAMIN TIP 21



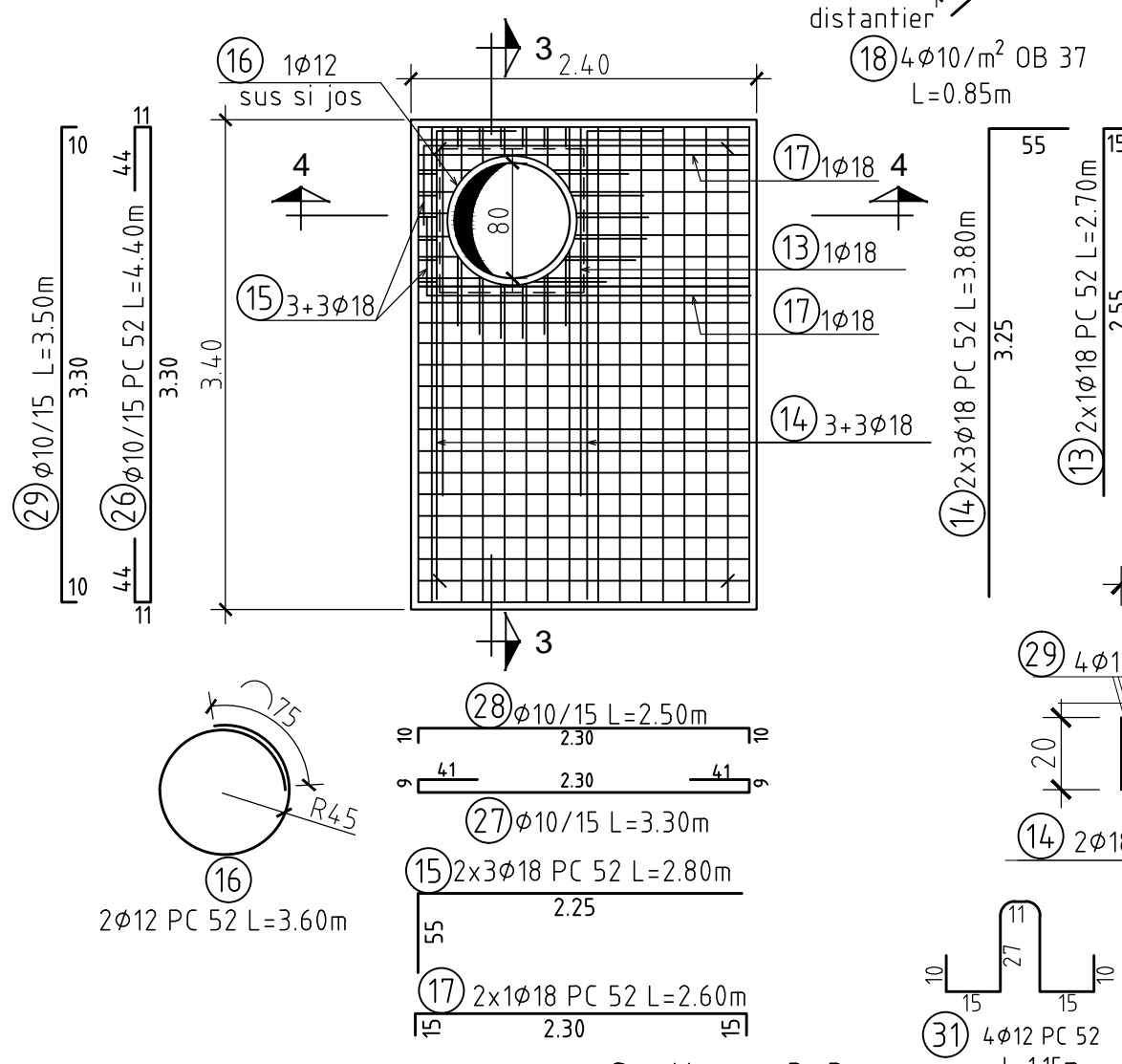
SECTIONEA A-A

SCARA 1:50



ARMARE PLACA PREFABRICATA

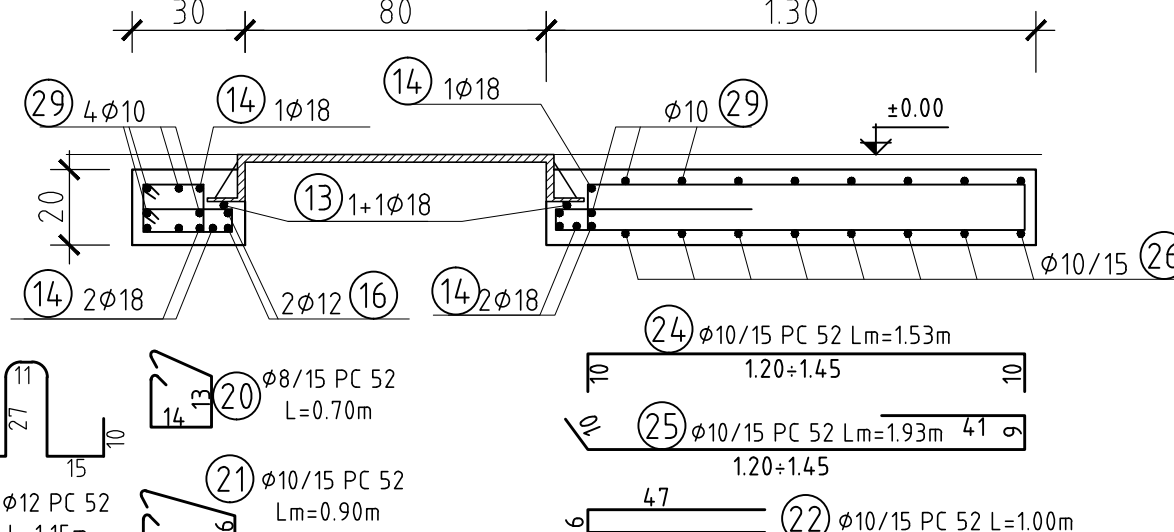
SCARA 1:50



- NOTA:**
- Acoperirea nominala cu beton a armaturilor este:
 - radier 45mm
 - pereti 40mm
 - placa interior 20mm
 - placa exterior 30mm
 - Zona superioara a caminului se va betona pana la cota 0.00(cota finita drum), daca partea carosabila nu este din asfalt.
 - Prezenta plansa se va citi impreuna cu plansele de instalatii hidraulice.
 - Capacul va fi carosabil cu rama patrata, clasa D 400.
 - Dimensiunile partiale ale armaturilor sunt cotate la interior.

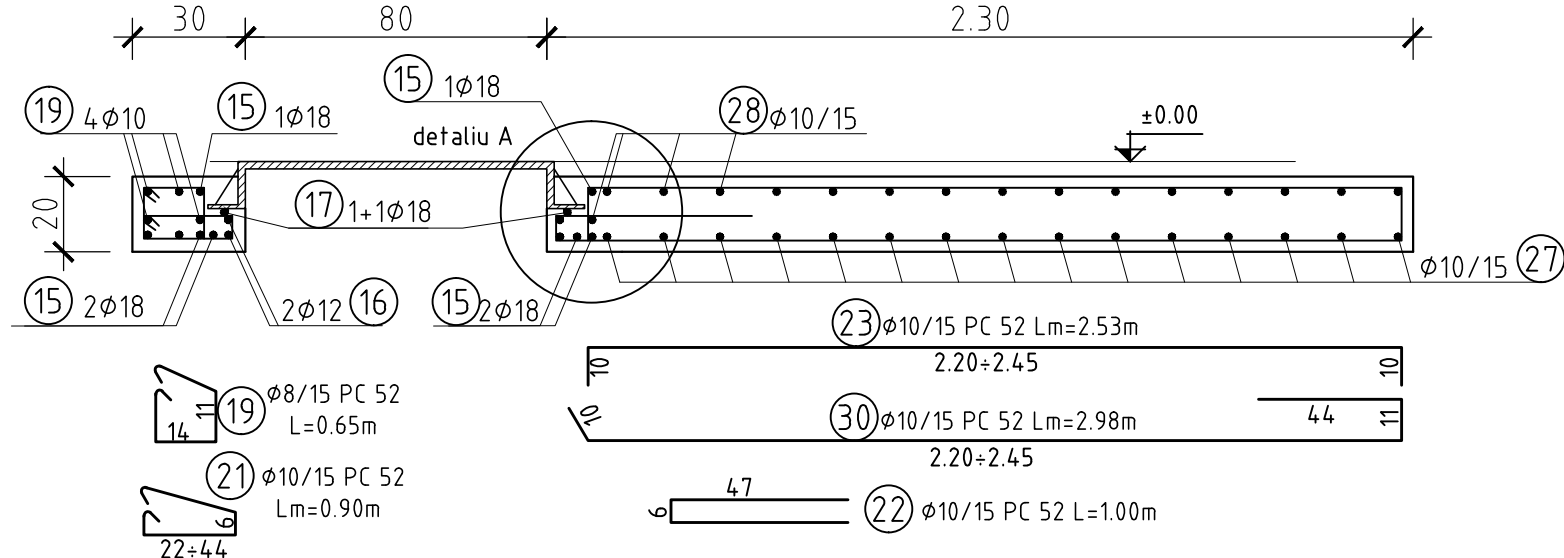
Sectionea 4-4

SCARA 1:20



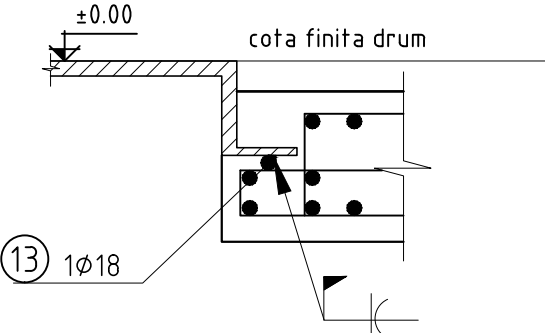
Sectionea 3-3

SCARA 1:20



DETALIU A

SCARA 1:10



Extras de armatura

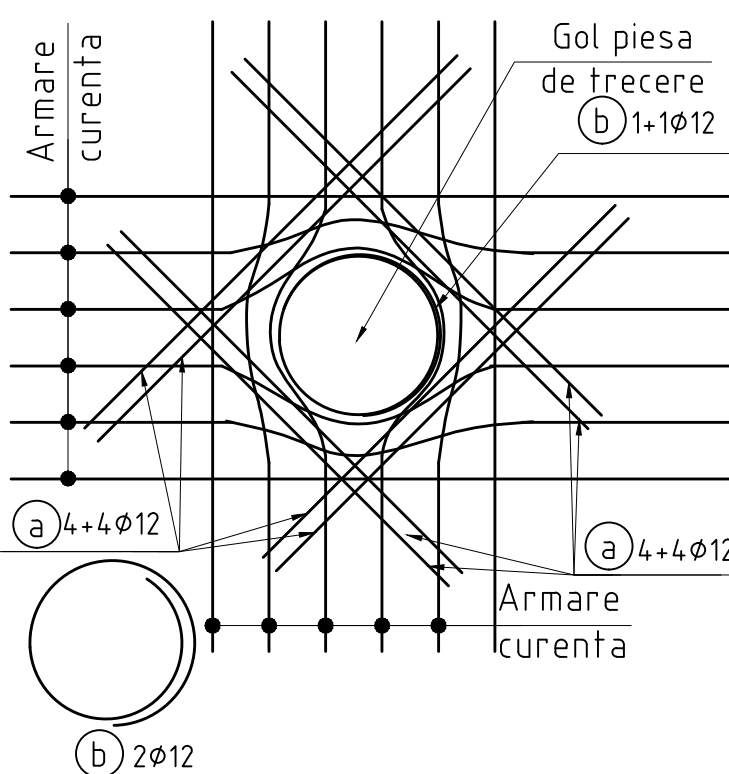
Marca	ø	Buc	Lungime	OB 37		PC52					
				ø 6	ø 10	ø 8	ø 10	ø 12	ø 18	ø 20	
1	12	24	4.65					111.60			
2	12	24	4.15					99.60			
3	12	17	5.55					94.35			
4	12	17	5.15					87.55			
5	10	148	1.85					273.80			
6	10	26	3.80					98.80			
7	10	26	2.80					72.80			
8	10	26	6.90					179.40			
9	6	60	0.30	18.00							
10	6	72	0.60	43.20							
11	10	24	0.85		20.40						
12	20	6	2.00							12.00	
13	18	2	2.70						5.40		
14	18	6	3.80						22.80		
15	18	6	2.80						16.80		
16	12	2	3.60					7.20			
17	18	2	2.60						5.20		
18	10	24	0.85		20.40						
19	8	7	0.65			4.55					
20	8	7	0.70			4.90					
21	10	12	Lm=0.90					10.80			
22	10	12	1.00					12.00			
23	10	6	Lm=2.53					12.18			
24	10	6	Lm=1.53					9.18			
25	10	6	Lm=1.93					11.58			
26	10	10	4.40					44.00			
27	10	17	3.30					56.10			
28	10	20	2.50					50.00			
29	10	13	3.50					45.50			
30	10	6	Lm=2.98					14.88			
31	12	4	1.15					4.60			
32	12	8	1.60					12.80			
33	12	2	1.10					2.20			
34	12	16	1.70					27.20			
35	12	2	1.40					2.80			
36	12	16	1.85					29.60			
37	12	2	2.00					4.00			
ml/ø				61.20	40.80	9.45	891.02	483.50	50.20	12.00	
kg/ml				0.222	0.617	0.395	0.617	0.888	1.998	2.466	
kg/ø				13.59	25.17	3.73	549.76	429.35	100.30	29.59	
TOTAL				kg/buc		39		1113			

BETON DE EGALIZARE
BETON ARMAT
OTEL BETON

C8/10,X0,Dmax 32,S3,CEM II B-M (S-LL) 32.5 R
C 25/30,XC4,XF3,C10.2,Dmax 22,S3,P4,CEM II/A-S 32.5 R
OB 37, PC 52

Detaliu armare goluri piese de trecere

SCARA 1:20



Lungimea si marile barelor a si b

DN mm	Bara marca a		Bara marca b	
110	32	1.60	33	1.10
200	34	1.70	35	1.40
400	36	1.85	37	2.00

Rev	Nume	Ver	Aprb	Data	Descriere
-----	------	-----	------	------	-----------

Autoritatea contractanta: **S.C.AQUACARAS S.A. CARAS SEVERIN**



Adresa: P-ta Republicii, nr. 7, Resita
Jud. Caras Severin
Tel.: +40 255 212 458
Fax: +40 255 214 421
E-mail:office@aquacaras.ro

Proiectant:

Consortiu S.C Eptisa Romania S.R.L. si Eptisa Servicios de Ingenieria S.L.
Sos. Dudesti-Pantelimon nr. 42, RAMS center, et. 5, corp A,
sector 3, Bucuresti
Tel:+ 40 21 301 14 70
Fax: + 40 21 301 14 80
www.eptisa.com



Proiect:

**MODERNIZAREA INFRASTRUCTURII DE
APA SI APA UZATA IN JUDETUL
CARAS SEVERIN - AGLOMERAREA RESITA**

Plansa:

**Retele apa
Camin tip 21-Plan Armare**

Desenat: Ing. B. Paraschiv Data: Aprilie 2013

Verificat: Ing. M. Serbanoiu Data: Aprilie 2013

Aprobat: Ing. D. Spiridon Data: Aprilie 2013

Plansa nr.

CS-RE-PT/DA-A-R-21.2

Revizia

0